

QUICK START GUIDE

CONTROLLING THE Q380-EW VIA THE APP

WI-FI ENABLED MINI SPLIT REMOTE CONTROL

**YOU MUST FIRST FOLLOW THE
INSTRUCTIONS TO “PAIR” THE Q-380EW
WITH YOUR MINISPLIT
(AIR CONDITIONER /HEAT PUMP)
REFER TO THAT QUICK START GUIDE OR
TO THE MANUAL**

FOR WI-FI TO WORK THIS CONTROLLER MUST
BE PLUGGED IN TO WALL POWER AND LEFT
POINTING AT THE MINI SPLIT

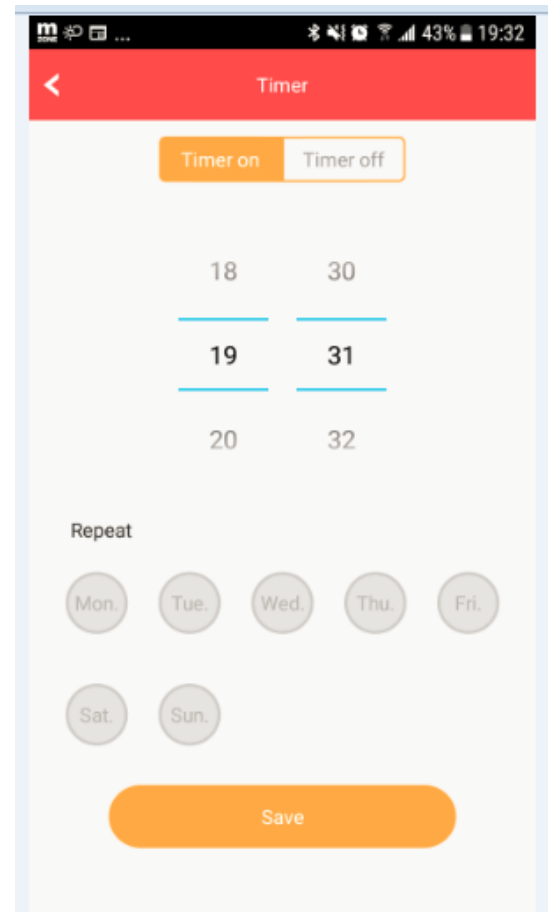


2 WAYS TO POWER: VIA WALL BASE OR WALL MOUNT (DIRECT PLUG)

IF YOU DISCONNECT FROM WALL PLUG,
CONTROLLER WILL STILL CONTROL THE MINI SPLIT
FROM THE BUTTONS BUT NOT FROM YOUR
PHONE. YOU CAN ALSO USE AS A FLASHLIGHT



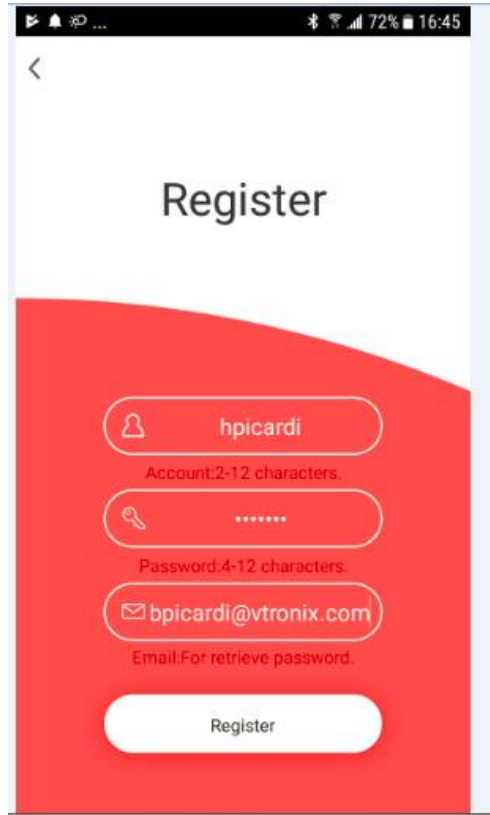
WHEN PLUGGED IN TO WALL POWER YOU CAN CONTROL VIA “GENIUS REMOTE” APP ON YOUR PHONE AND SET UP SCHEDULES



2 WAYS TO POWER: VIA WALL BASE OR WALL MOUNT (DIRECT PLUG)

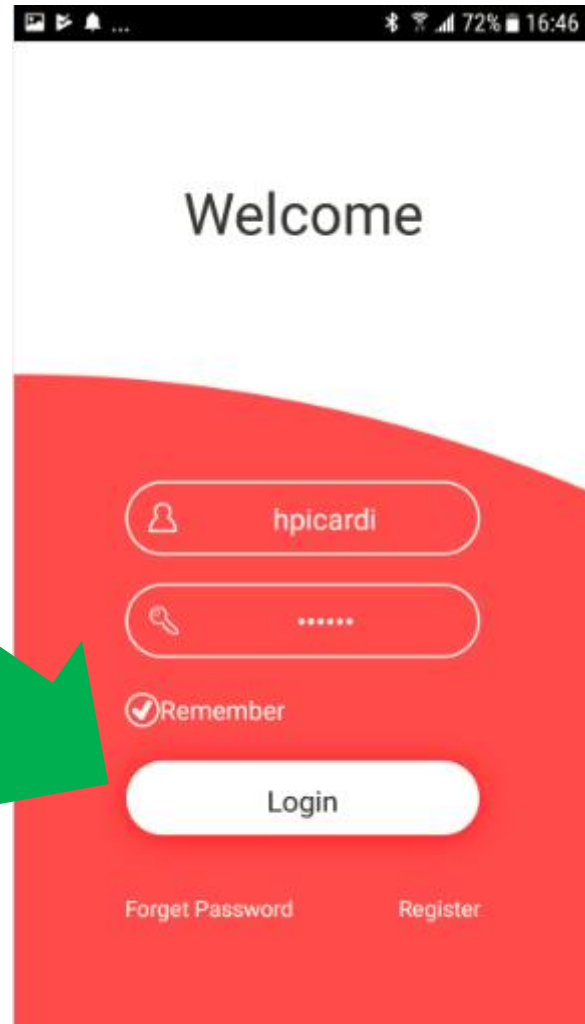
STEPS TO SET UP WI-FI:

1. DOWNLOAD THE “GENIUS REMOTE” APP
2. REGISTER
3. THE PASSWORD MUST BE 4-12 CHARACTERS- NUMBERS OR LETTERS ONLY!!

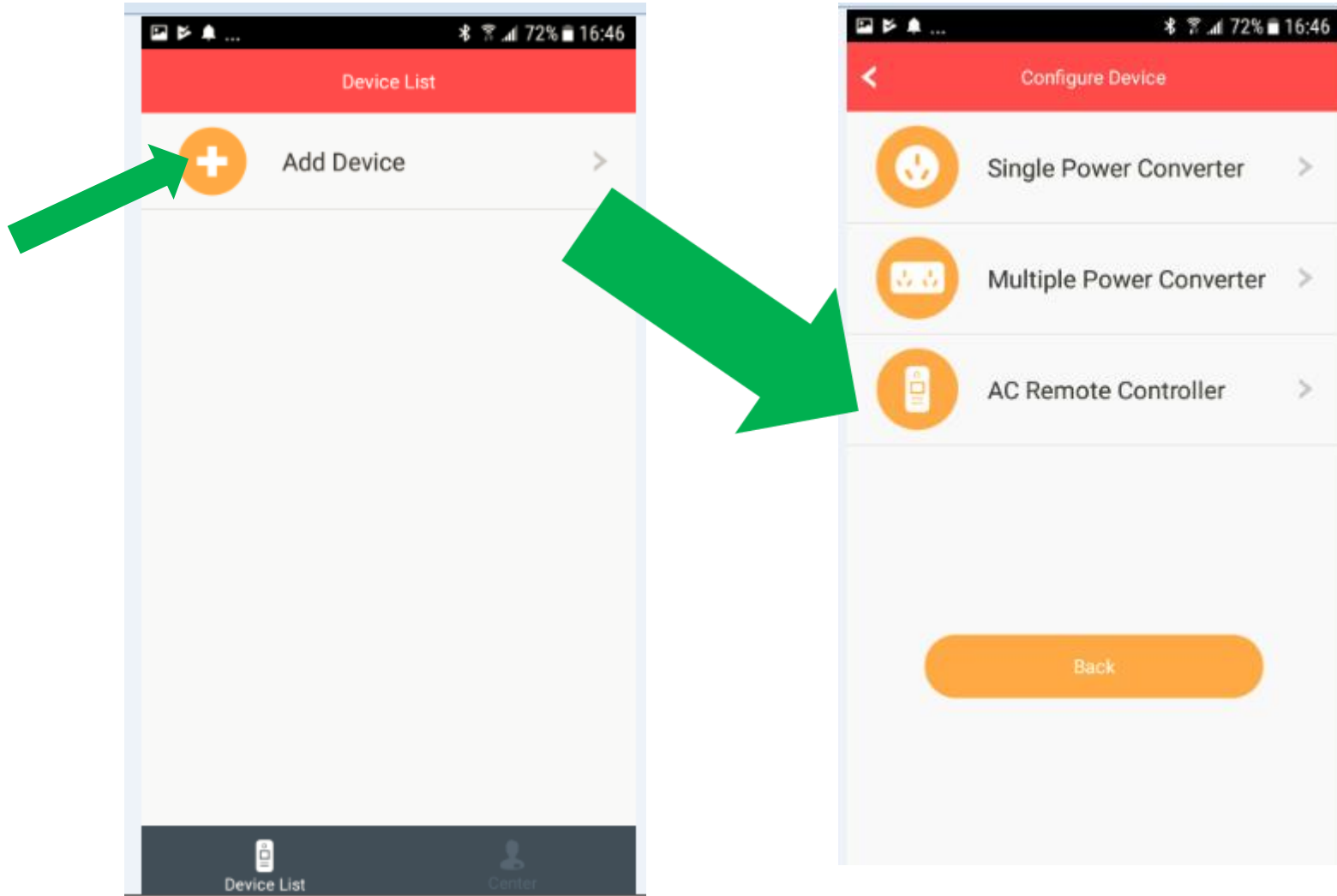


The screenshot shows the registration screen of the Genius Remote app. The screen has a white top section with the word "Register" in the center. Below this is a red section containing three input fields and a "Register" button. The first field is for the account name, with the text "hpicardi" and a note "Account: 2-12 characters." below it. The second field is for the password, with a key icon and a note "Password: 4-12 characters." below it. The third field is for the email address, with the text "bpicardi@vtronix.com" and a note "Email: For retrieve password." below it. The "Register" button is at the bottom of the red section. The top of the screen shows a status bar with a back arrow, notification icons, and system icons for signal, Wi-Fi, battery (72%), and time (16:45).

AND LOGIN



PICK ADD DEVICE AND AC REMOTE CONTROLLER



AND FOLLOW THE INSTRUCTIONS ON YOUR PHONE

